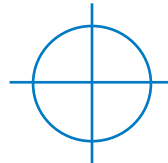


# Spring 2021 On the Level

Pacific Northwest Carpenters  
Institute



---

Supporting Carpenters and Industry Partners

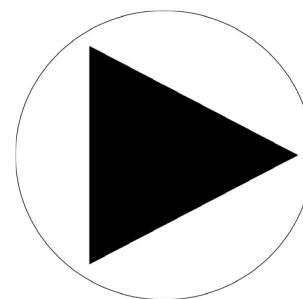
---

## A Message From the Director: Video Update



*Michael Hawes, Executive Director,  
PNCI*

At PNCI, we strive to provide our members with the most up-to-date information about what's happening at the training center. *Click on the play button for a brief message.*



---

## PNCI Partners with OSU to Build a CLT Test Connection

PNCI apprentices, led by John Jellum and Dale Howe, partnered with Oregon State University's School of Engineering to build Cross-Laminated Timber (CLT) connection mock-ups for structural testing. OSU did not have the resources to do the actual construction, so PNCI, along with the Northwest Carpenters Union (NWCU) came in to help.



*(from left to right) Dale Howe-PNCI, Arijit Sinha,-OSU, Greg Gordon-T-Gerding Construction Structural Superintendent, Alberto Sosa, Apprentice, (sitting) Erica Fischer-OSU, Sylas Caputo-Apprentice, Brian Keith-Apprentice, and John Jellum-PNCI*



Erica Fischer, Assistant Professor School of Civil and Construction Engineering, had contacted the PNWRCC asking for help building this project. John Jellum, Instructor/Coordinator for PNCI, Mid-valley was brought into the discussion. They made plans to incorporate the project into an existing PNCI class. They also solicited the help of Brian Zeller, Superintendent with T-Gerding and a Mid Valley JATC Employer Member, who agreed to provide a supervisor to assist and gain experience.

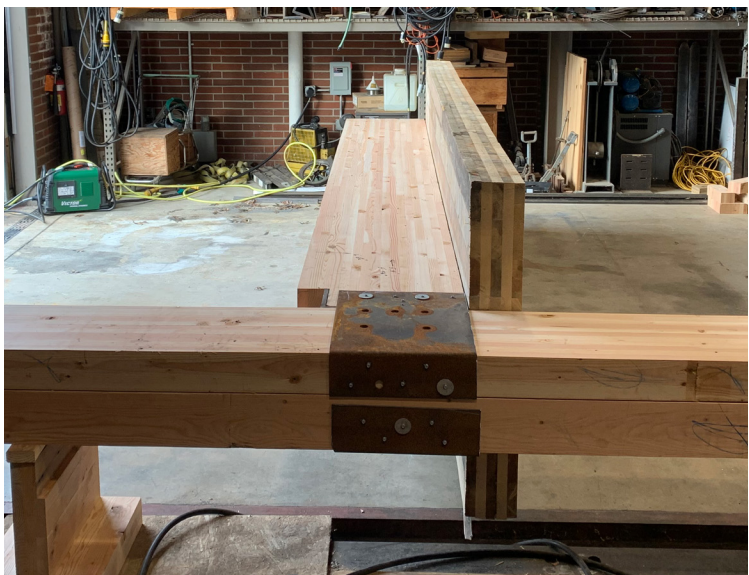
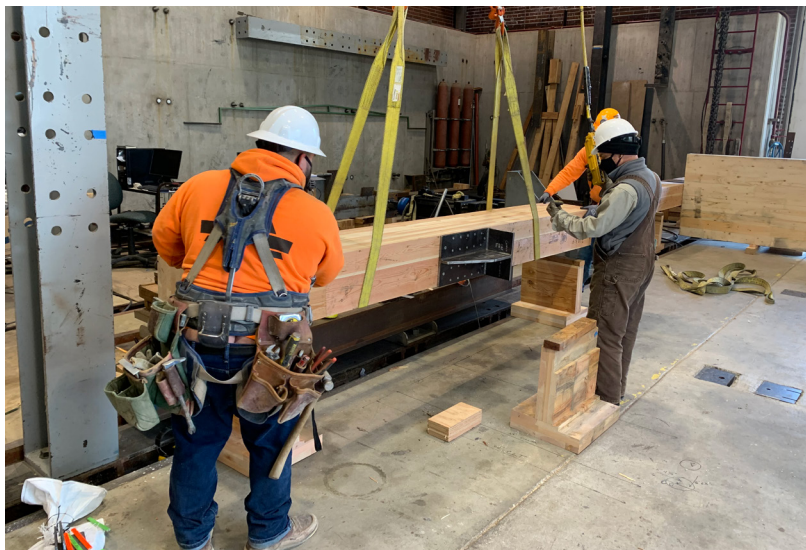
OSU designed four to five different mockup connections of the components, beam to post/column with a CLT panel on top.

The partnership allowed students to learn about mass timber and the connection complexities involved in its construction.

“I learned a lot about the way Mass Timbers are used for building and the steps involved in fastening them together, quite a bit about rigging (safety, procedures, calculations on how to find center of gravity and weights based on material used) which was relatively new to me, and a lot about the different types of Mass Timber that we as Union Carpenter’s will hopefully get to work with more and more throughout our careers!”—Sylas Caputo, carpenter apprentice.

There are nine more connections to assemble after OSU completes the testing of the six currently built. A Three-story Mass Plywood Panel (MPP) project is in the works for May.

*(cont. next page)*

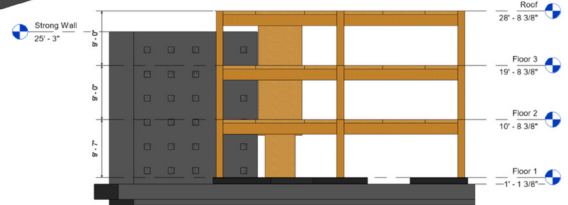
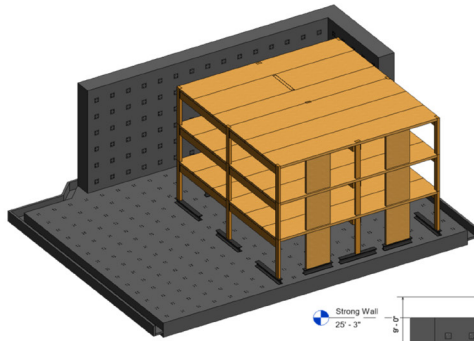


[Click the image below to see PNWRCC’s Video](#)

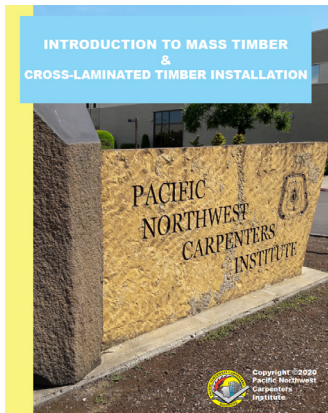


OSU currently has a CLT building on campus which was constructed by T-Gerding a year and a half ago. "Personally, I would be thrilled to learn more about not just CLT's but all types of mass timbers. Working with wood is where my heart is when it comes to carpentry and working with those materials on a mass scale is fascinating to me. It was an absolute honor to be among the first apprentices to get to take this class and I would more than happy and am hopeful to learn more about Mass Timber," said Syllas.

PNCI is also working with WoodWorks to obtain a CLT mock-up for their upcoming Mass Timber Class.



Above and below are preliminary drawings for OSU's future project



(Above) New Mass Timber Curriculum to be offered soon at PNCI.



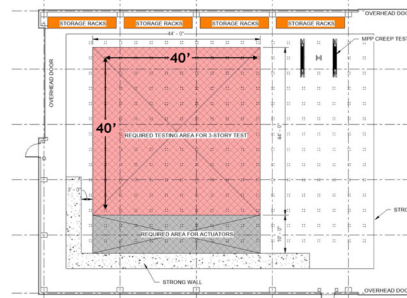
The number one concern on any job site is safety. The nature of CLT construction is heavy beams and panels moved into place by specialized cranes, usually by crane. Possessing a rigging certification is extremely important. PNCI offers a rigging certification class as a continuing education course. The contractors building with CLT want their carpenters to have this certification. At a minimum, you should be aware of all the hazards involved with having a crane operating on site.

"I was on a job site where they were using a tower crane. The ballroom was landing a steel joist. They landed the load and the ballroom started to lean up. The riggers saw the rigging had swung around his leg on a half-beam. The line took him up off the ground. Luckily he grabbed the rigging and remained upright using his other hand he was able to make the crane to stop back down. It could've ended very badly." -Bill Pratt

Tighten are a critical piece to loading a load. They are also very dangerous. Some experts say you should never have a knee in them, as this can cause them to get caught up on something, including your arm or leg. "When loading a CLT panel, ask yourself, 'will the rigging be accessible to the people landing the load?'" and, "will the rigging get in the way of raising the panels?" These things should be discussed during your pre-task plan.

CLT Installation 32

### Testing at Emerson Laboratory



## Suicide Prevention and Awareness

PNCI will be rolling out QPR training for all apprentices in April 2021. The acronym QPR stands for Question, Persuade and Refer. PNCI is working directly with Lines for Life to provide this training. From their webpage: "Lines for Life is a regional non-profit dedicated to preventing substance abuse and suicide. We offer help and hope to individuals and communities, and promote mental health for all. Our work addresses a spectrum of needs that include intervention, prevention, and advocacy. We educate, train, and advocate to prevent issues of substance abuse, mental illness, and thoughts of suicide from reaching crisis levels. But when a crisis arises or support is needed, we are available 24/7/365 to intervene with personalized help." linesforlife.org

**1-800-273-TALK (8255)**  
**Text HELLO to 741741**

**Help for crisis or suicide prevention is a call or text away. It is free, confidential, and always available.**

**Mental Health Toolbox**

**SAFEBUILD ALLIANCE**